

Meet ArCADiasoft

Developer of innovative software for architects and construction engineers.

The creator of ArCADia BIM,
software compatible with Building Information Modeling.

ArCADia BIM 11 **NEW VERSION!**




**An advanced program
for designing in BIM technology.**

NEW FEATURES:

- integration of drawing functions of architecture, construction and installations in one interface
- improved visualizations with an animation effect
- DWG 2018

ArCADiasoft equals 20 years of experience in creating computer applications for the construction industry and more than 100 products for architects and engineers. Our programs range from structural design to interior and installation design to energy performance of buildings calculations to buildings' surroundings design. ArCADiasoft is the author of the ArCADia BIM system.

read more 



TECHNOLOGIES



RESELLER



MULTIMEDIA

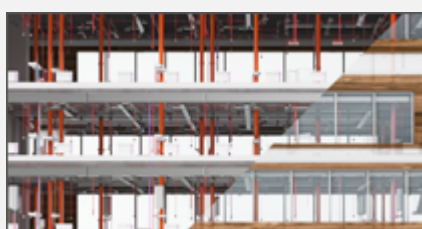


"We have created the first Polish, also unique on the global scale,

object-oriented building information modeling system (BIM), assisting in the preparation of construction documentation. Now thanks to the ArCADia system, designing takes on a new dimension."

Jarosław Chudzik, MSc
CEO of INTERsoft, owner of ArCADiasoft

[read more](#) →



ArCADia BIM CAD software system supporting BIM technology.

The concept of a system of industry programs in line with BIM technology and closely cooperating with each other was established in our company about 10 years ago. Its beginnings are the ArCADia-Architektura program whose first goal was to facilitate and accelerate the implementation of architectural design by introducing objects such as a multi-layer wall, window, door etc. into the drawing.

[read more](#) →



See how ArCADia BIM works with AutoCAD®

The concept of a system of industry programs in line with BIM technology and closely cooperating with each other was established in our company about 10 years ago. Its beginnings are the ArCADia-Architektura program whose first goal was to facilitate and accelerate the implementation of architectural design by introducing objects such as a multi-wall, window, door, etc. into the drawing.

[read more](#) →